



Instinct Guides You



Elziver Close, Chickerell, Weymouth Offers In Excess Of £350,000

- Beautifully Presented
- Four Bedrooms
- Southerly Garden
- Sun Room
- Cul-De-Sac
- Large Kitchen/Diner
- Garage & Driveway
- Open Plan Layout



Registration No. 08079158 Directors Mr Wilson, Mr Tominey

Courtesy Notice Upon using WilsonTominey as selling agents ensure we are made aware of contractual obligations you may be under. We can then proceed accordingly.

WilsonTominey Ltd
15 Westham Rd.
DT4 8NS

T 01305 775500
E sales@wilsontominey.co.uk
W www.wilsontominey.co.uk



Positioned in a quiet cul-de-sac within the popular area of Chickerell, this extended four-bedroom detached home offers flexible open plan accommodation, ideal for family living. The property features a generous modern kitchen diner, a bright sun room, low-maintenance southerly rear garden, a stylish lounge, a modern bathroom and a garage with driveway parking.

The ground floor begins with an entrance hallway that leads through to a bright and inviting lounge finished in neutral tones. This space flows into a full-width sun room at the rear, creating a relaxed and versatile area that overlooks the garden. The adjoining kitchen diner has been updated with modern units, integrated appliances, and granite-effect worktops with a breakfast bar area creating the divide with a cloakroom to complete this level.

On the first floor, the layout includes four bedrooms. The main bedroom is a good-sized double positioned at the rear, with two further bedrooms offering flexible space for children, guests or home office use. Bedroom four, though compact, serves well as a study or nursery. The contemporary family bathroom is fitted with a modern white suite, splashboard surrounds, a shower over the bath, and chrome fittings.

Externally, the garden has been designed for ease of maintenance with a combination of paved patio and decorative stone areas, ideal for outdoor seating and dining. A timber shed provides storage, and the garden is enclosed by fencing. To the front, the property benefits from a private driveway and access to a single garage.

Located within easy reach of schools, local amenities and transport routes, this smartly presented home offers well-balanced accommodation with scope for flexible family living in a desirable residential setting.

Room Dimensions

Living Room 15'7" x 10'0" (4.76 x 3.05)

Kitchen/Diner 17'6" x 9'6" (5.35 x 2.90)

Conservatory 15'7" x 7'7" (4.75 x 2.32)

Bedroom One 13'3" x 8'8" (4.05 x 2.65)

Bedroom Two 9'4" x 8'1" (2.87 x 2.48)

Bedroom Three 10'2" x 6'7" (3.11 x 2.01)

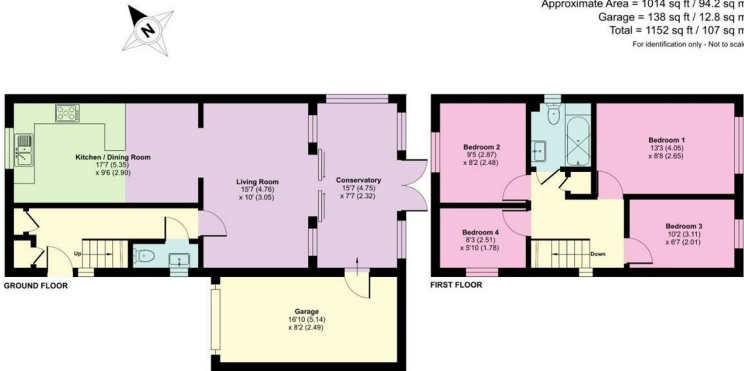
Bedroom Four 8'2" x 5'10" (2.51 x 1.78)

Garage 16'10" x 8'2" (5.14 x 2.49)



Elziver Close, Chickerell, Weymouth, DT3

Approximate Area = 1014 sq ft / 94.2 sq m
Garage = 138 sq ft / 12.8 sq m
Total = 1152 sq ft / 107 sq m
For identification only - Not to scale



Floor plan produced in accordance with RICS Property Measurement Standards incorporating International Property Measurement Standards (IPMS) Residential - Groundwork 2025. Produced for Wilson Tominey Ltd. REF: 1334111



Energy Efficiency Rating		
	Current	Potential
Very energy efficient - lower running costs		
(92 plus) A		85
(81-91) B		
(69-80) C		70
(55-68) D		
(39-54) E		
(21-38) F		
(1-20) G		
Not energy efficient - higher running costs		
England & Wales		EU Directive 2002/91/EC

Environmental Impact (CO ₂) Rating		
	Current	Potential
Very environmentally friendly - lower CO ₂ emissions		
(92 plus) A		
(81-91) B		
(69-80) C		
(55-68) D		
(39-54) E		
(21-38) F		
(1-20) G		
Not environmentally friendly - higher CO ₂ emissions		
England & Wales		EU Directive 2002/91/EC

Important Notice: Particulars are prepared for marketing purposes only and should not be treated as a statement of the condition of any building, fixture or appliance. All measurements, floor plans and lease/ maintenance are approximate and not to be relied upon. Purchasers should make their own checks before relying on any of the information provided herein. * For double glazing and gas radiator heating, it is where specified.